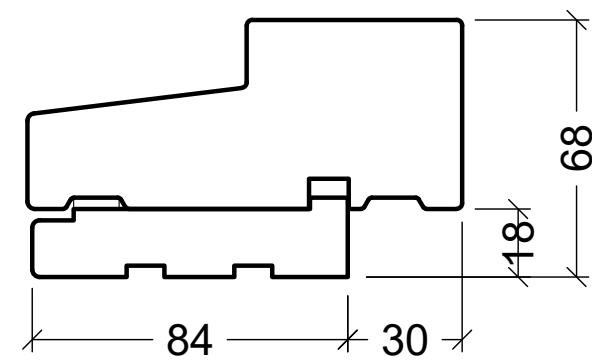
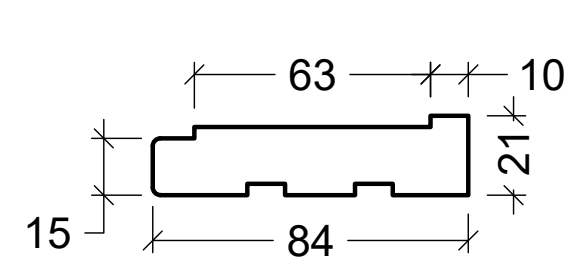
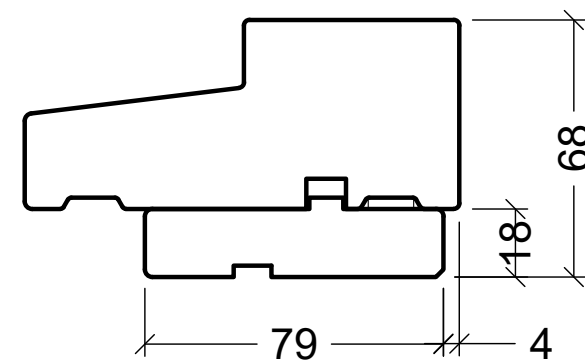
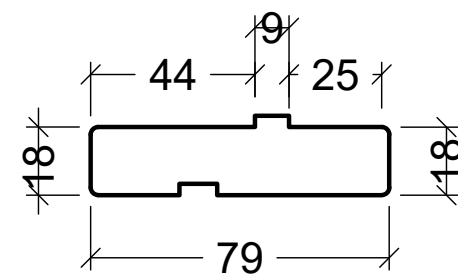


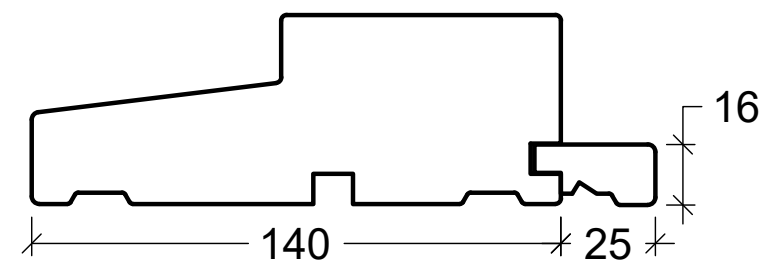
# Outward opening



Packer type 18x84

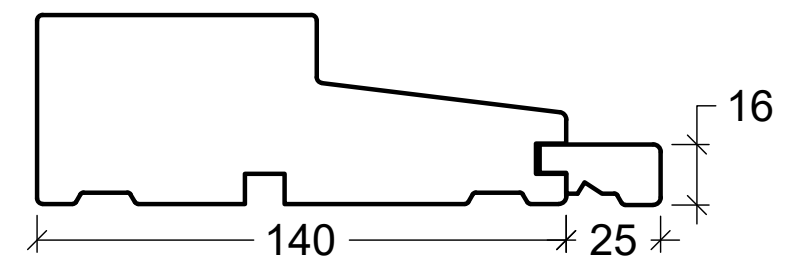


Packer type 18x79



Depth packer type 16-25  
in groove type 8x8x8  
Outward opening doors  
(for 140mm frame only)

# Inward opening



Depth packer type 16-25  
in groove type 8x8x8  
Inward opening doors  
(for 140mm frame only)

**VELFAC®**

VELFAC is a trademark of DOVISTA A/S

System: VELFAC Ribo - VELFAC Classic

English: Packers

Dansk: Påforinger

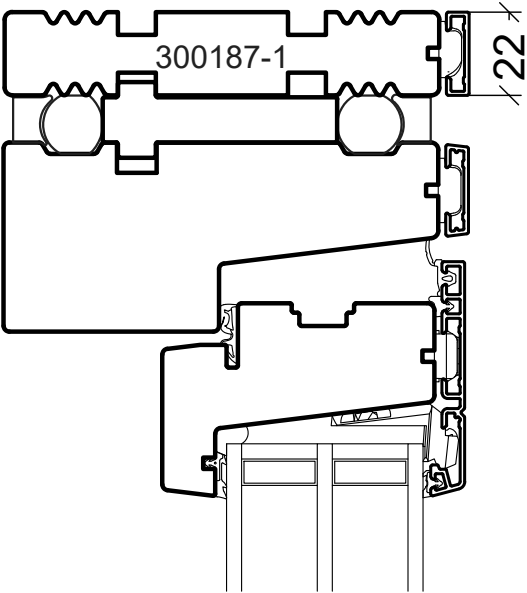
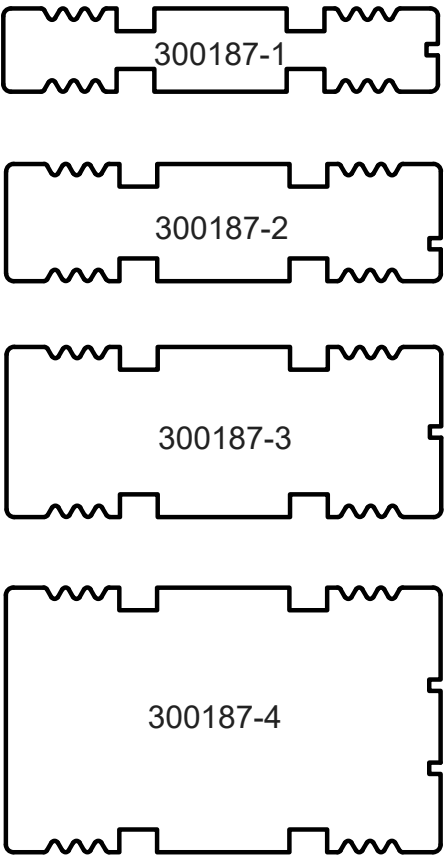
Scale: 1:2

Edition No. 7


01.22 © 2011, 2022

© DOVISTA A/S, CVR-no. 21147583. All intellectual property rights, copyright as well as all rights in know-how vest in DOVISTA A/S. This drawing may not be reproduced, stored, or transmitted in any form by any means (electronic, mechanical, photocopying, recording or otherwise) without the prior written consent of DOVISTA A/S. This drawing is to be used only for the purposes specified by DOVISTA A/S and for no other purpose. We reserve all rights to change the product and product range without notice.

Packer type for wood/aluminium



Packer types for wood/wood:  
300188

 VELFAC is a trademark of DOVISTA A/S	System: VELFAC Ribo - VELFAC Classic	Scale: 1:2
	English: Packers for head	Edition No. 7
	Dansk: Påforinger til overkarm	01.22 © 2011, 2022
© DOVISTA A/S, CVR-no. 21147583. All intellectual property rights, copyright as well as all rights in know-how vest in DOVISTA A/S. This drawing may not be reproduced, stored, or transmitted in any form by any means (electronic, mechanical, photocopying, recording or otherwise) without the prior written consent of DOVISTA A/S. This drawing is to be used only for the purposes specified by DOVISTA A/S and for no other purpose. We reserve all rights to change the product and product range without notice.		