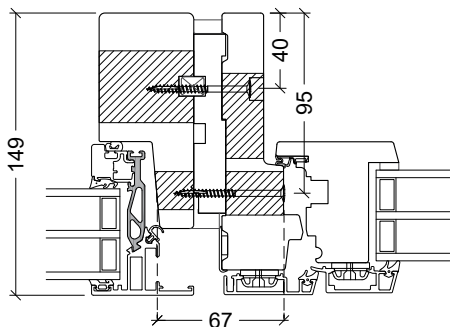


COUPLING INSTRUCTIONS

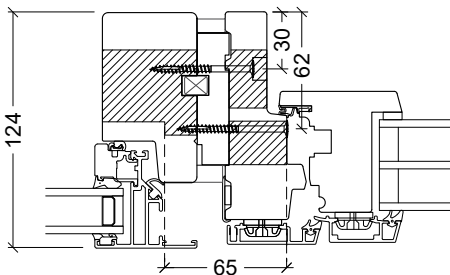
SAMMENSTILLINGS-GUIDE

VELFAC IN - VELFAC 200

VELFAC 200 ENERGY - VELFAC In



VELFAC 200 alu - VELFAC In



GB

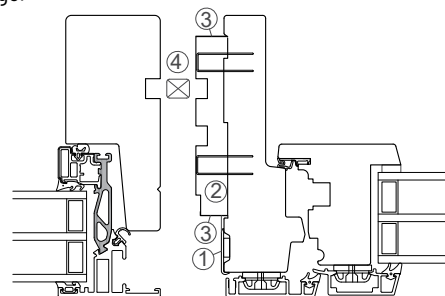
FACTORY FITTED:

- > Cover profile (1)
- > Coupling profile (2)
- > Bond breaker tape (3) - DO NOT REMOVE

SUPPLIED SEPARATELY:

- > 150mm alignment profiles (4)

Insert the alignment profiles to make the elements line up. Screw the frames together as per drawing on the front page.



DK

Sammenstil elementerne vha. placeringsprofilerne på et fast plant underlag og skru karmene sammen, som vist på tegningen på forsiden.

FABRIKS-MONTERET:

- > Dækprofil (1)
- > Sammenstillingsliste (2)
- > Fuge tape (3) - MÅ IKKE FJERNES

LØST MEDLEVERET:

- > Placeringsprofil (4)