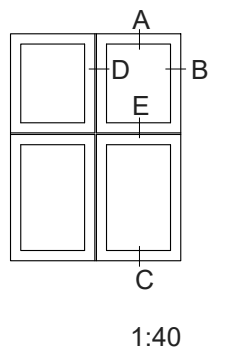
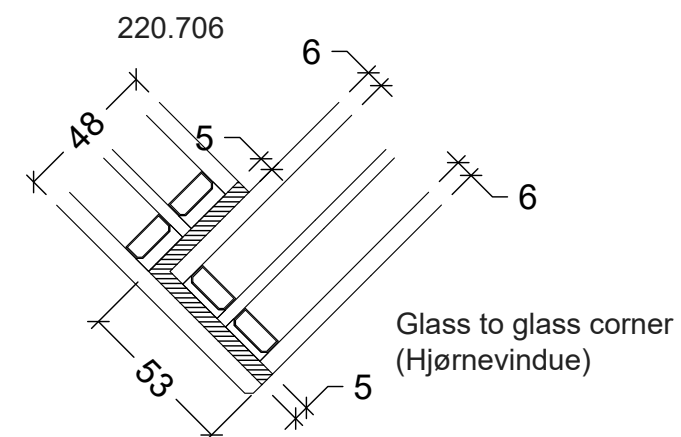
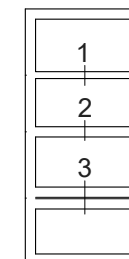
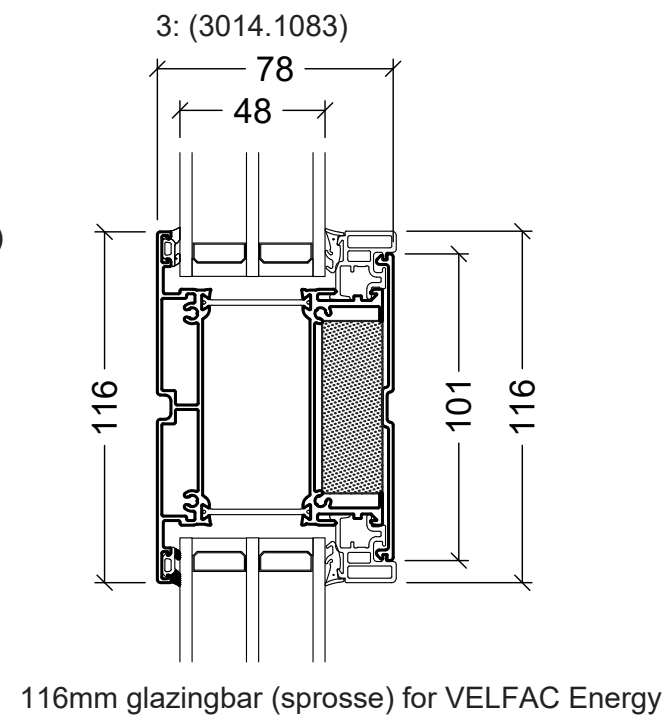
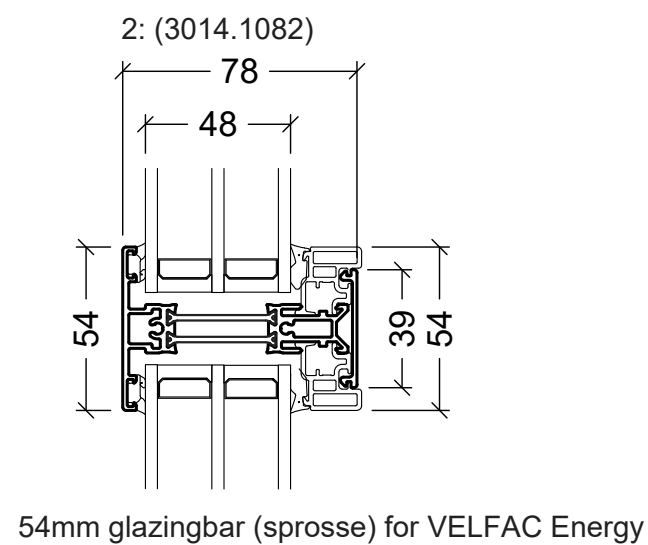
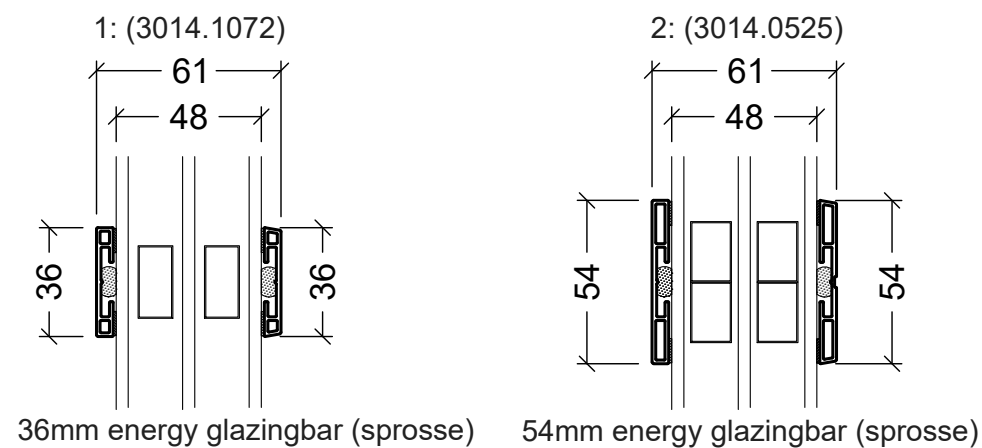


Note:
90mm mullion only available as fixed
90mm lodpost findes kun som fast post.



VELFAC® VELFAC is a trademark of DOVISTA A/S	System: VELFAC 200 Energy	Scale: 1:2,5 / 1:40
	English: Standard details	Edition No. 09
	Dansk: Standard snit	01.21 © 2013, 2021

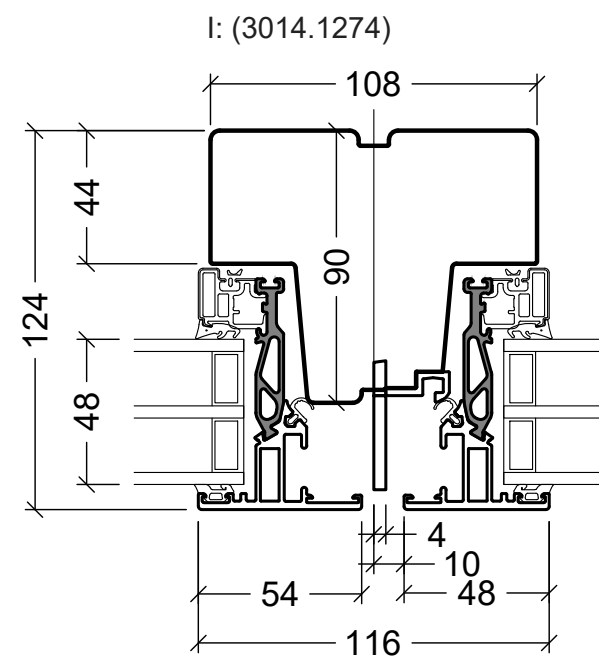
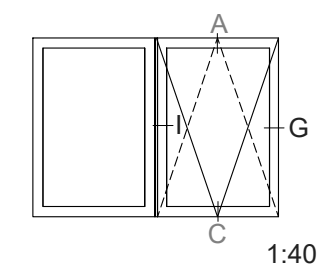
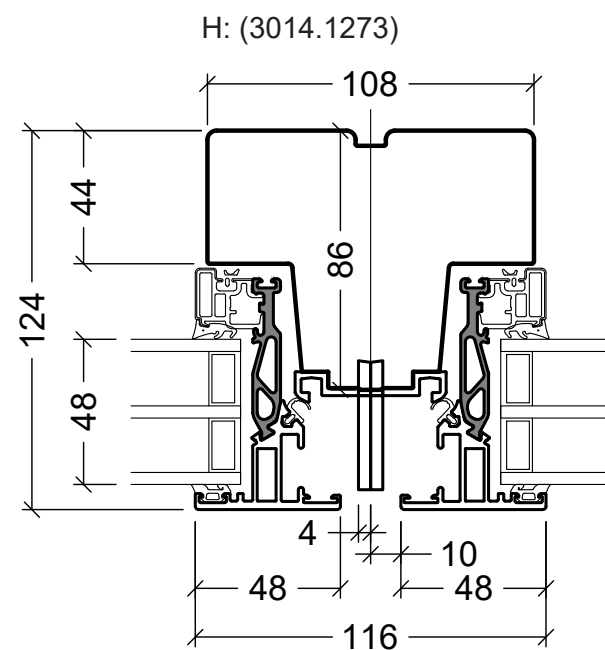
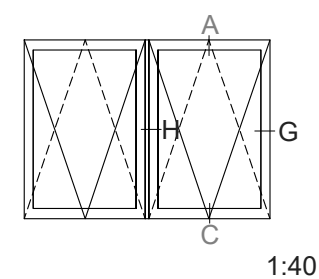
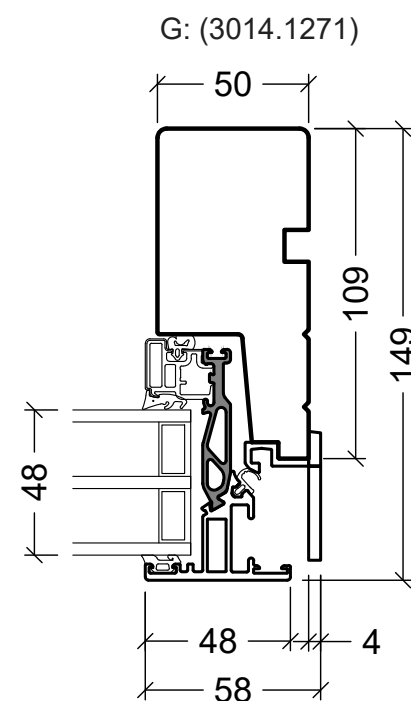
© DOVISTA A/S, CVR-no. 21147583. All intellectual property rights, copyright as well as all rights in know-how vest in DOVISTA A/S. This drawing may not be reproduced, stored, or transmitted in any form by any means (electronic, mechanical, photocopying, recording or otherwise) without the prior written consent of DOVISTA A/S. This drawing is to be used only for the purposes specified by DOVISTA A/S and for no other purpose. We reserve all rights to change the product and product range without notice.



1:40

VELFAC® VELFAC is a trademark of DOVISTA A/S	System: VELFAC 200 Energy English: Glazing bars Dansk: Sprosser	Scale: 1:2,5 / 1:40
		Edition No. 09 01.21 © 2013, 2021

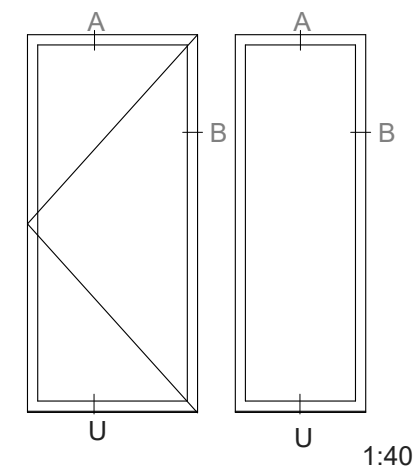
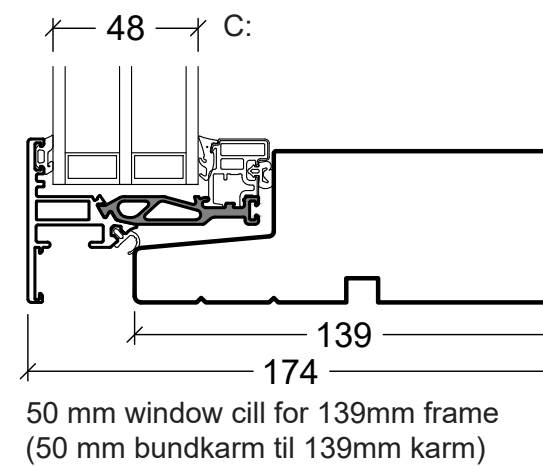
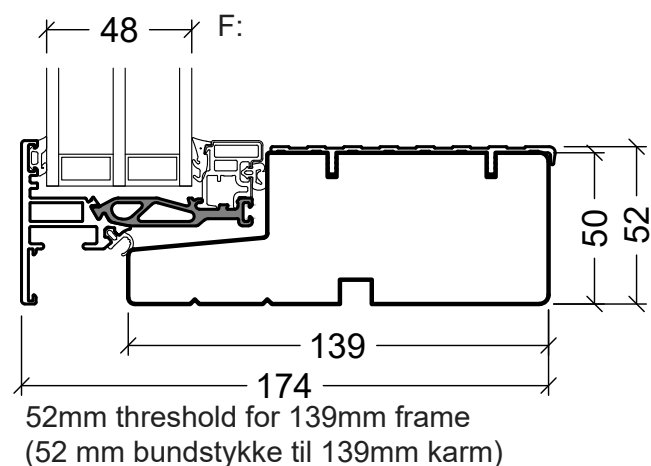
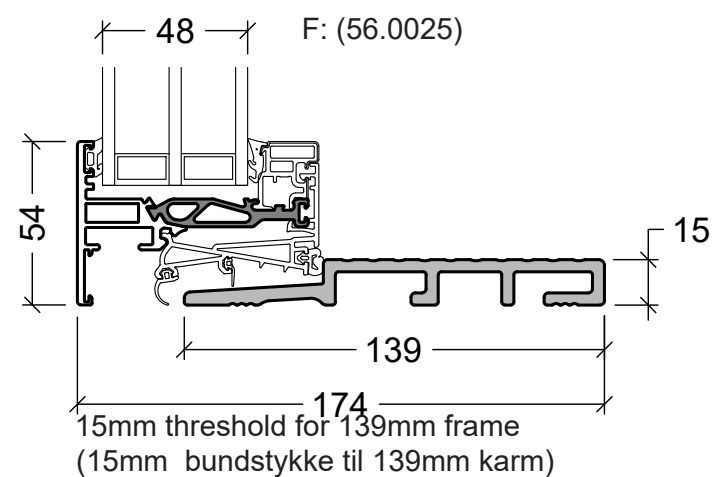
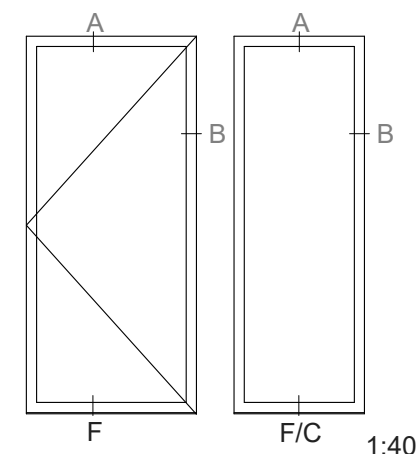
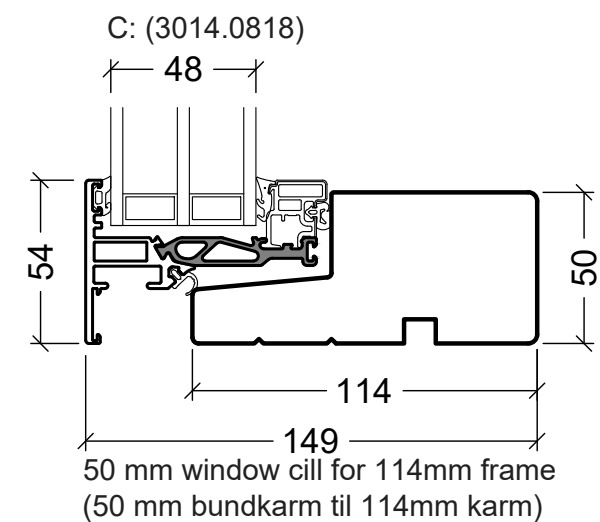
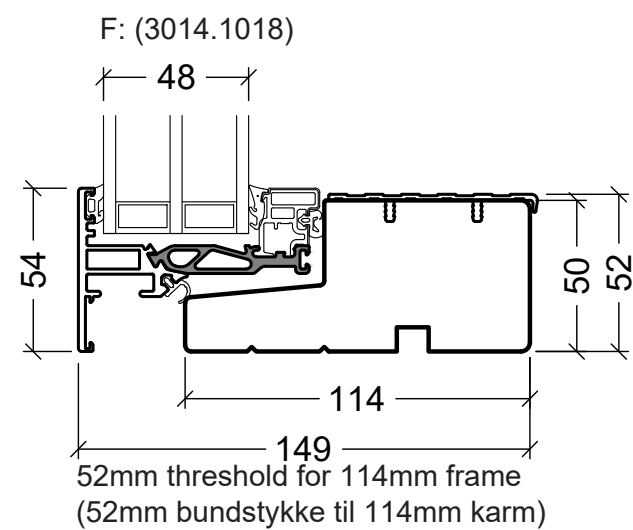
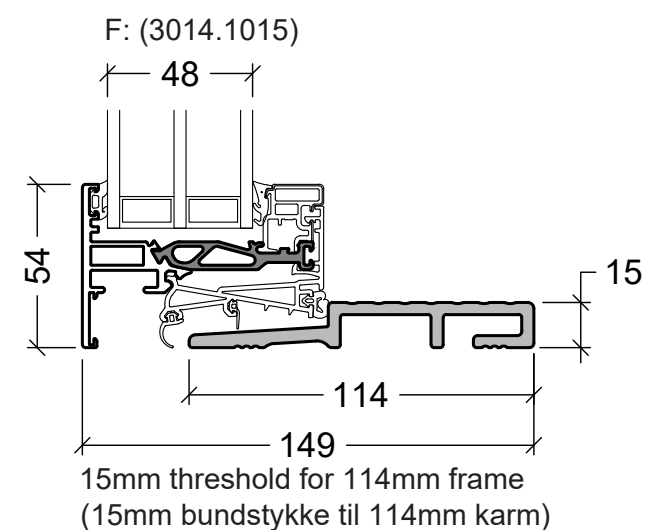
© DOVISTA A/S, CVR-no. 21147583. All intellectual property rights, copyright as well as all rights in know-how vest in DOVISTA A/S.
This drawing may not be reproduced, stored, or transmitted in any form by any means (electronic, mechanical, photocopying, recording or otherwise) without the prior written consent of DOVISTA A/S. This drawing is to be used only for the purposes specified by DOVISTA A/S and for no other purpose.
We reserve all rights to change the product and product range without notice.



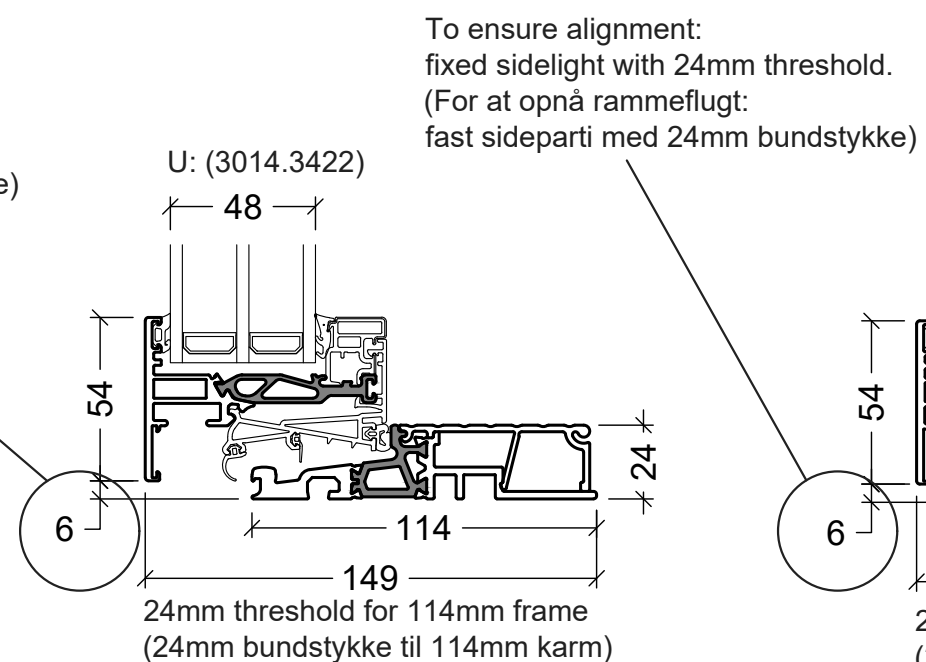
Ⓐ Ⓒ = as standard V200 Energy, see "Standard Details"

VELFAC® VELFAC is a trademark of DOVISTA A/S	System: VELFAC 200 Energy English: Reversible window Dansk: Vendevindue	Scale: 1:2,5 / 1:40
		Edition No. 09 01.21 © 2013, 2021

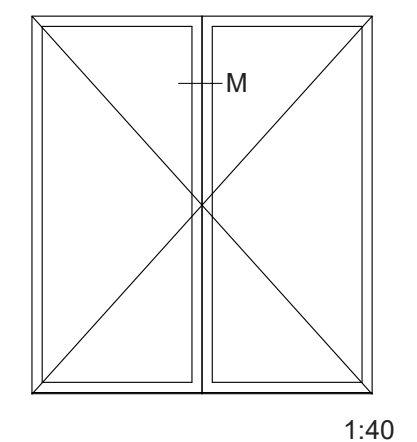
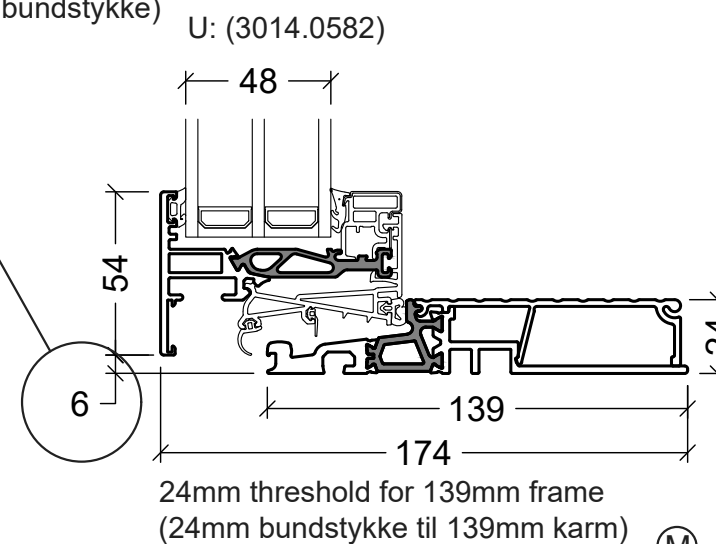
© DOVISTA A/S, CVR-no. 21147583. All intellectual property rights, copyright as well as all rights in know-how vest in DOVISTA A/S. This drawing may not be reproduced, stored, or transmitted in any form by any means (electronic, mechanical, photocopying, recording or otherwise) without the prior written consent of DOVISTA A/S. This drawing is to be used only for the purposes specified by DOVISTA A/S and for no other purpose. We reserve all rights to change the product and product range without notice.



To ensure alignment:
fixed sidelight with 24mm threshold.
(For at opnå rammeflugt:
fast sideparti med 24mm bundstykke)



To ensure alignment:
fixed sidelight with 24mm threshold.
(For at opnå rammeflugt:
fast sideparti med 24mm bundstykke)



(M) = see sliding casement door with 24mm threshold
(A) (B) = as standard V200 Energy, see "Standard Details"

VELFAC®

VELFAC is a trademark of DOVISTA A/S

System: VELFAC 200 Energy

English: Casement door

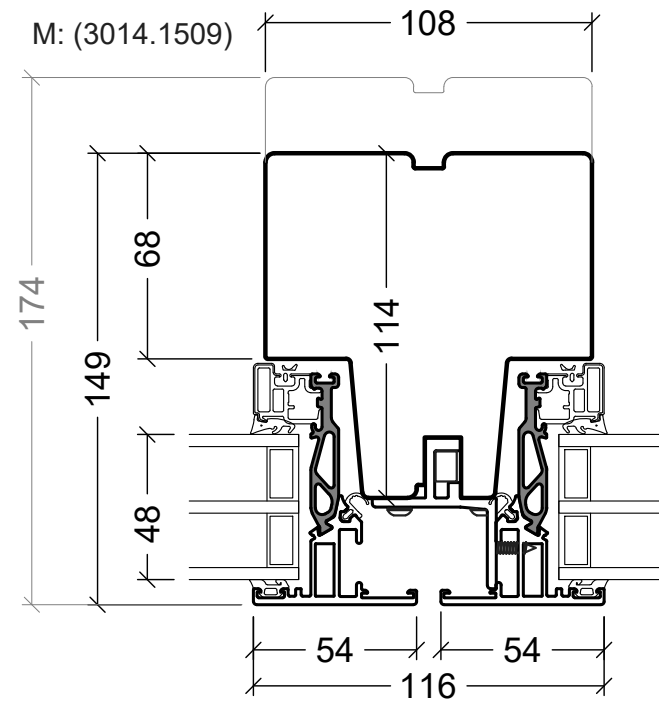
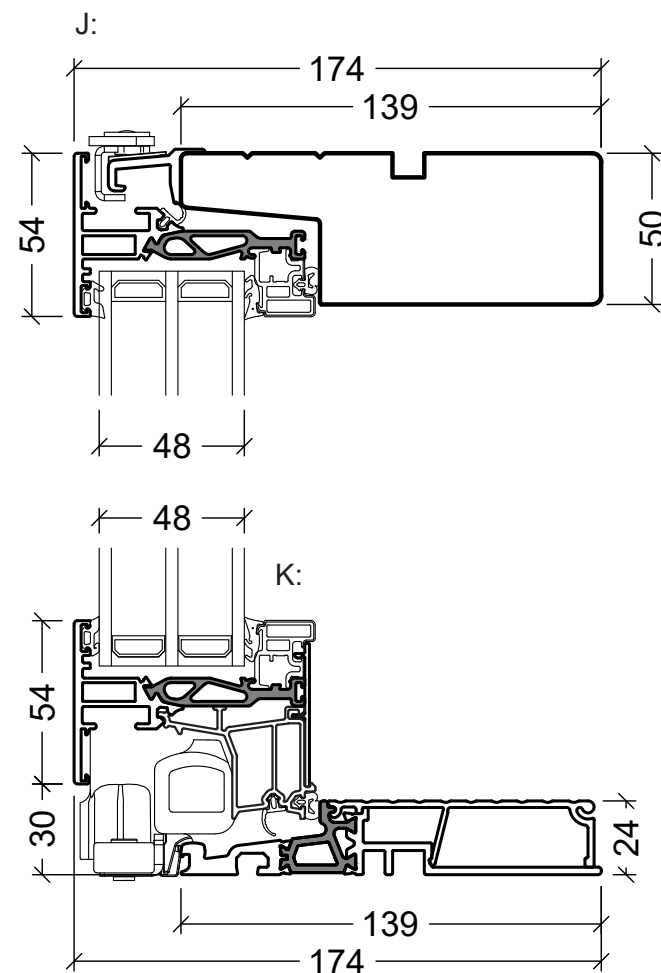
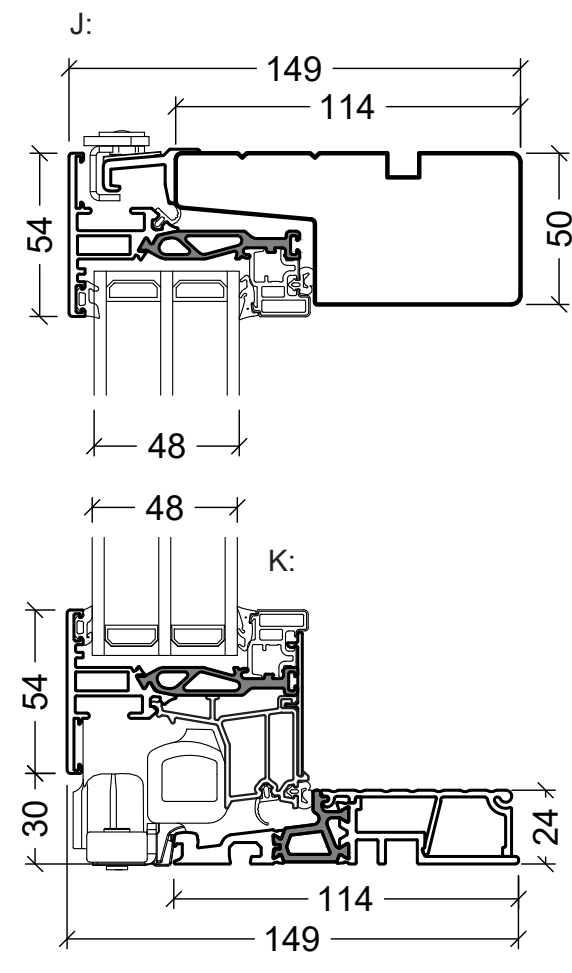
Dansk: Terrassedør

Scale: 1:2,5 / 1:40

Edition No. 09

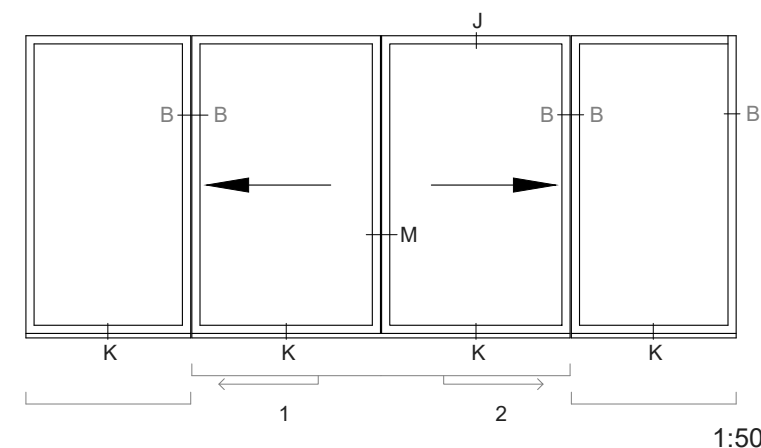
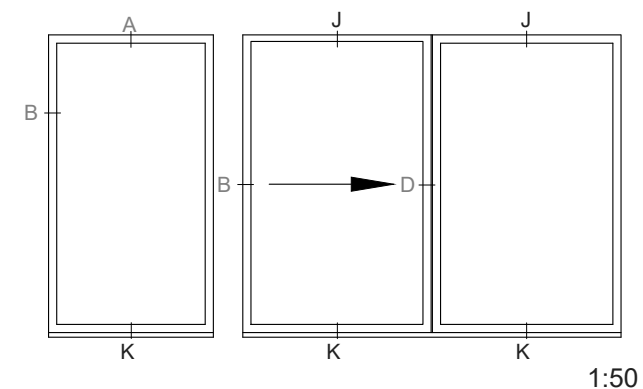
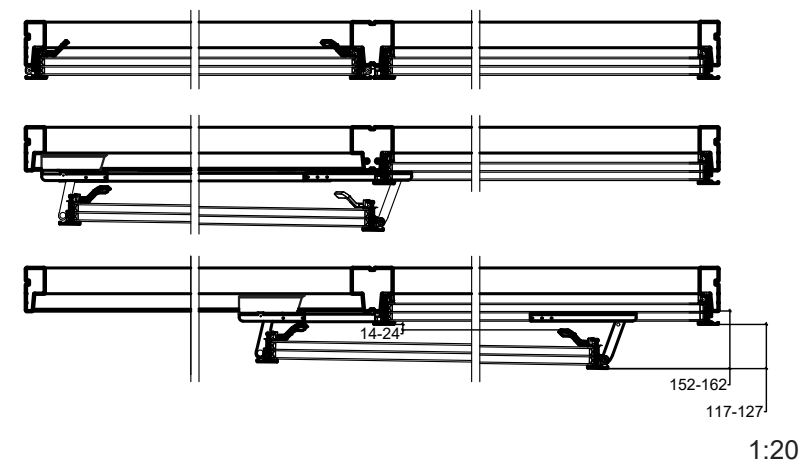
01.21 © 2013, 2021

© DOVISTA A/S, CVR-no. 21147583. All intellectual property rights, copyright as well as all rights in know-how vest in DOVISTA A/S. This drawing may not be reproduced, stored, or transmitted in any form by any means (electronic, mechanical, photocopying, recording or otherwise) without the prior written consent of DOVISTA A/S. This drawing is to be used only for the purposes specified by DOVISTA A/S and for no other purpose. We reserve all rights to change the product and product range without notice.

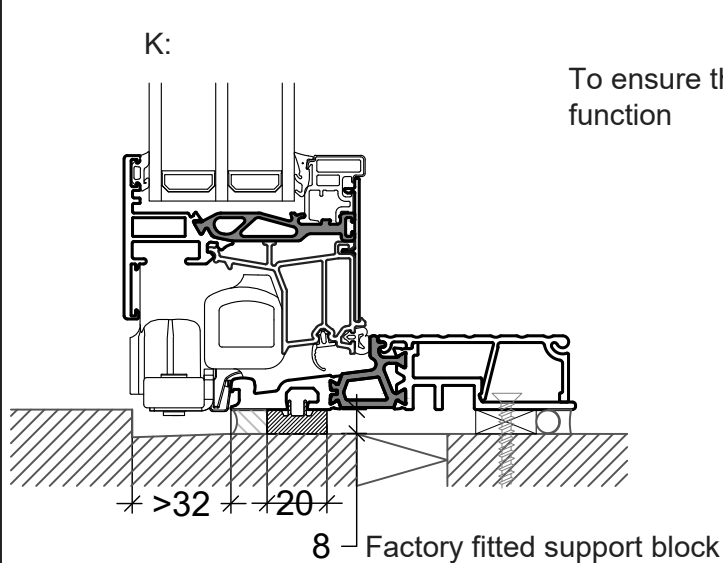


French casement (2-fløjet skydedør)

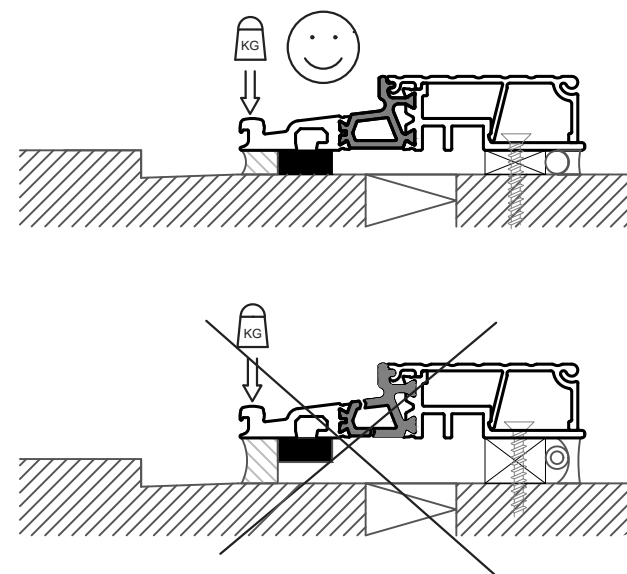
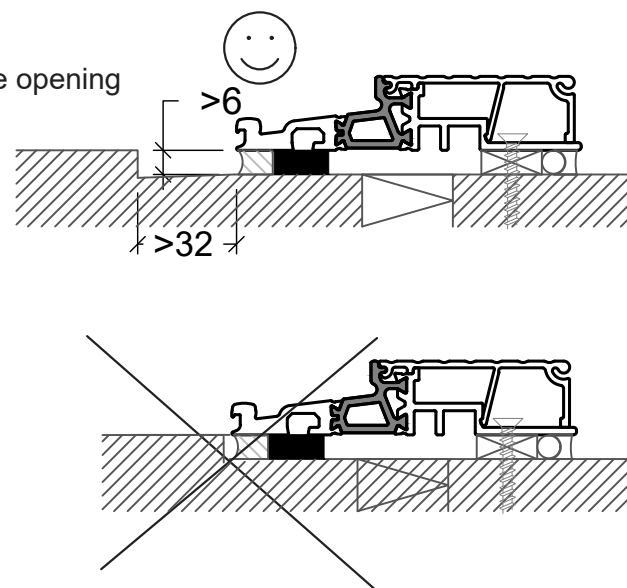
VELFAC 200 ENERGY, 1-leaf sliding casement door, 24mm threshold



INSTALLATION TIP



To ensure the opening function



Ⓐ Ⓑ Ⓓ = as standard V200 Energy, see "Standard Details"

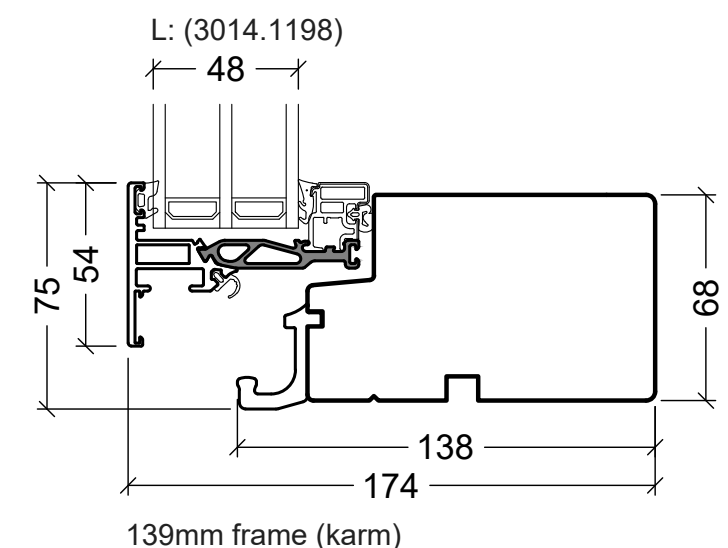
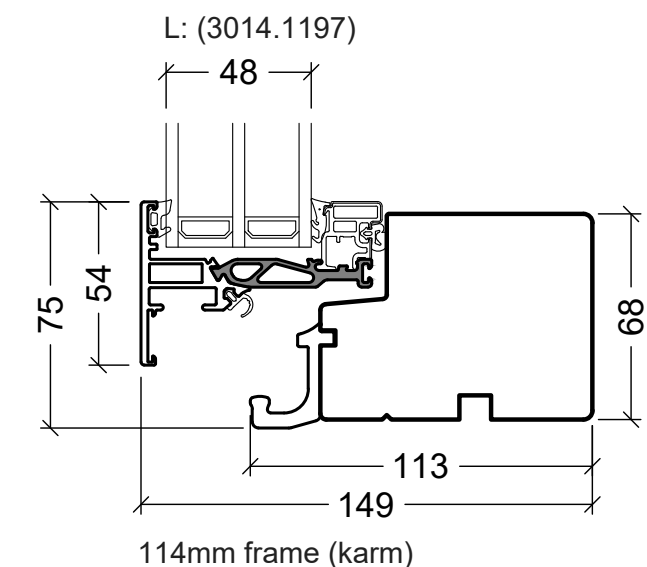
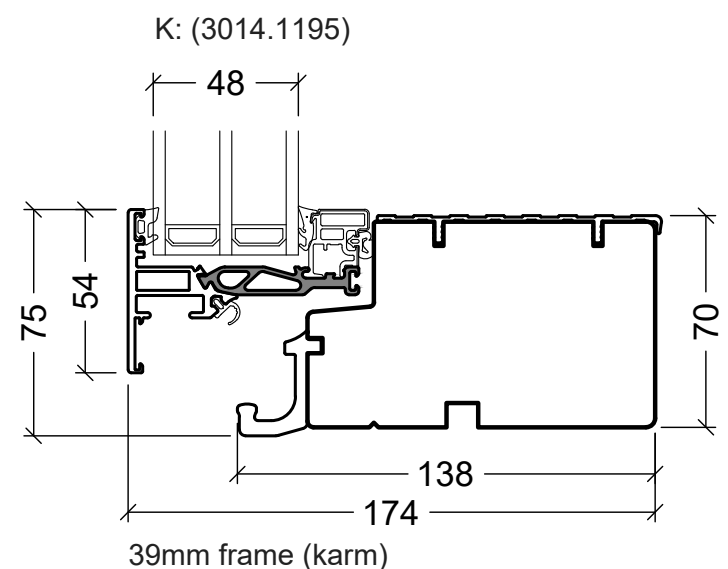
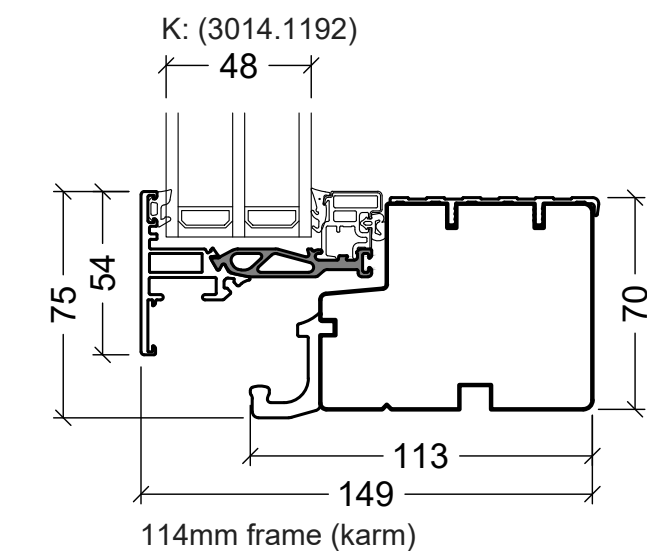
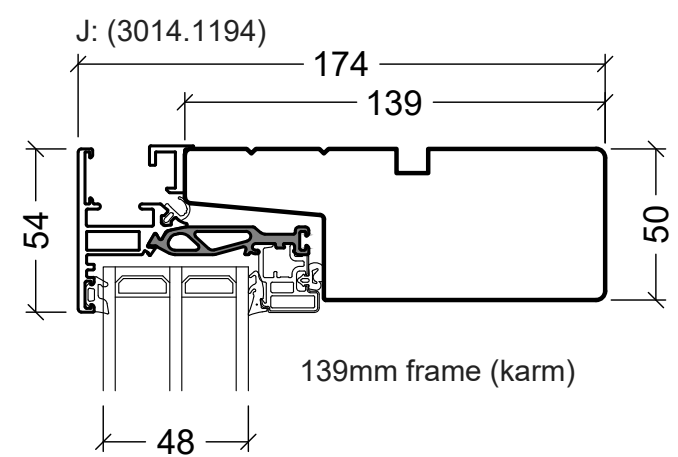
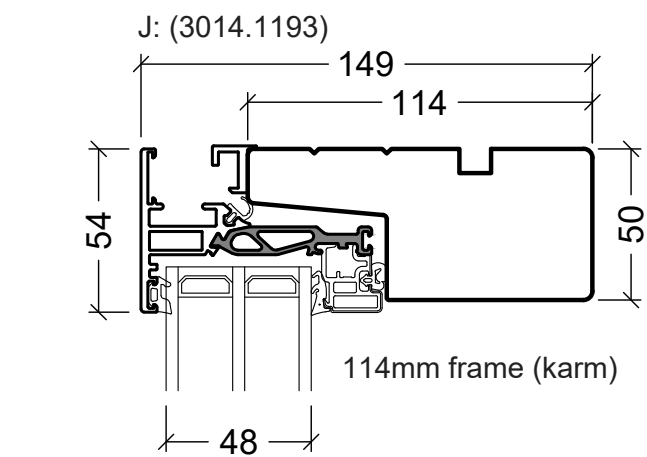
VELFAC®

VELFAC is a trademark of DOVISTA A/S

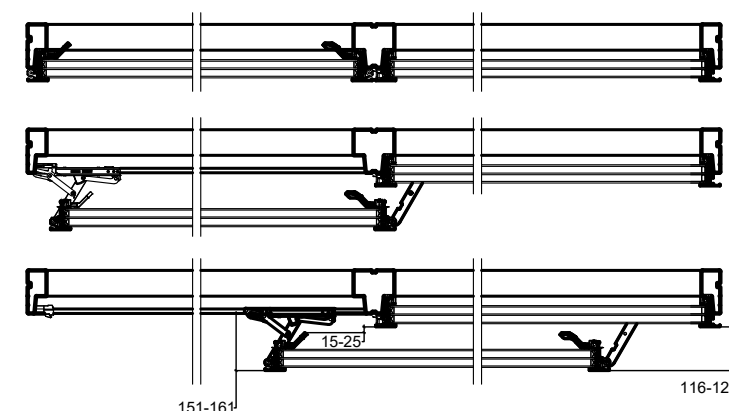
System: VELFAC 200 Energy
English: Sliding casement door, 24mm threshold
Dansk: Skydedør, 24mm bundkarm

Scale: 1:2,5 / 1:20 / 1:50
Edition No. 09
01.21 © 2013, 2021

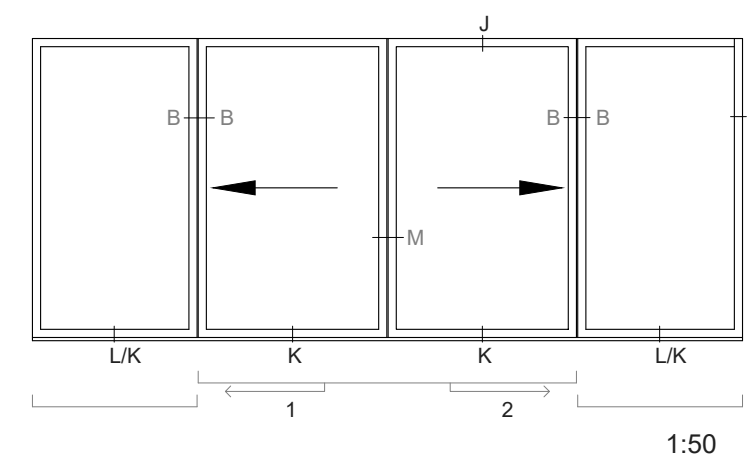
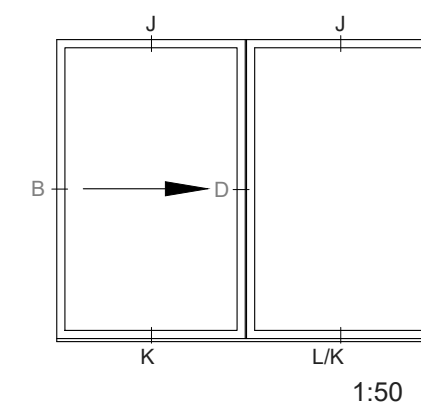
© DOVISTA A/S, CVR-no. 21147583. All intellectual property rights, copyright as well as all rights in know-how vest in DOVISTA A/S. This drawing may not be reproduced, stored, or transmitted in any form by any means (electronic, mechanical, photocopying, recording or otherwise) without the prior written consent of DOVISTA A/S. This drawing is to be used only for the purposes specified by DOVISTA A/S and for no other purpose. We reserve all rights to change the product and product range without notice.



VELFAC 200 ENERGY, sliding casement door, 70mm threshold



1:20



Ⓑ Ⓓ = as standard V200 Energy, see "Standard Details"

Ⓜ = see sliding casement door with 24mm threshold

VELFAC®

VELFAC is a trademark of DOVISTA A/S

System: VELFAC 200 Energy

English: Sliding casement door. 70mm threshold

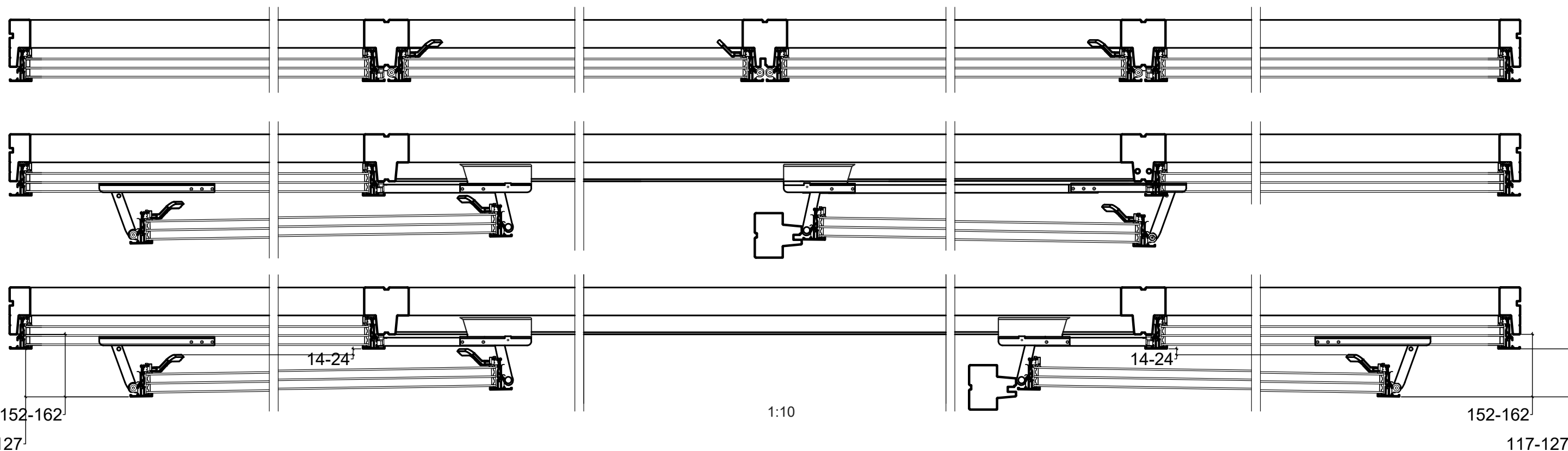
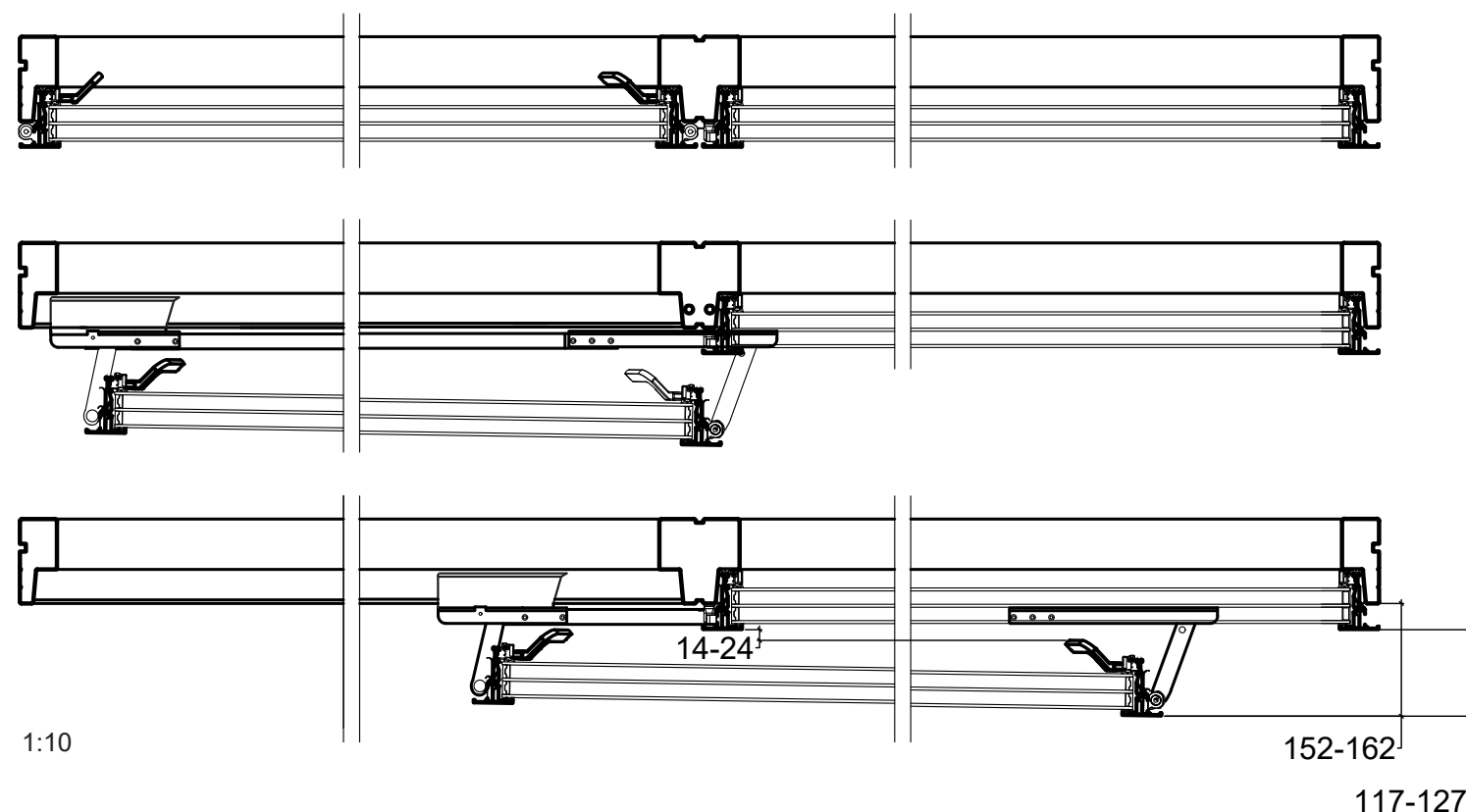
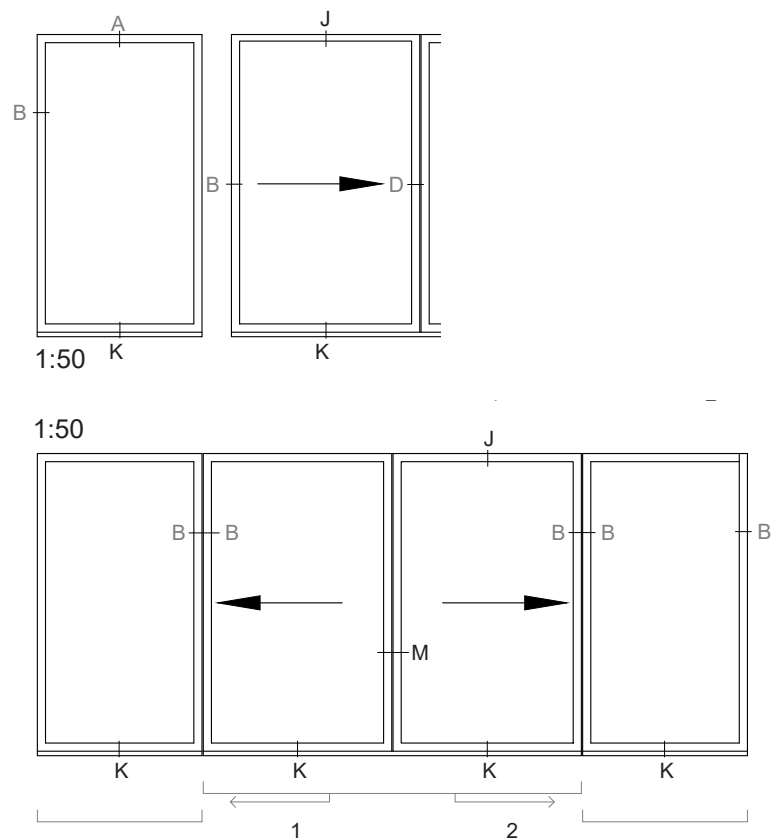
Dansk: Skydedør, 70mm bundkarm

Scale: 1:2,5 / 1:20 / 1:50

Edition No. 09

01.21 © 2013, 2021

© DOVISTA A/S, CVR-no. 21147583. All intellectual property rights, copyright as well as all rights in know-how vest in DOVISTA A/S. This drawing may not be reproduced, stored, or transmitted in any form by any means (electronic, mechanical, photocopying, recording or otherwise) without the prior written consent of DOVISTA A/S. This drawing is to be used only for the purposes specified by DOVISTA A/S and for no other purpose. We reserve all rights to change the product and product range without notice.



Ⓐ Ⓑ Ⓓ = as standard V200 Energy, see "Standard Details"

VELFAC®

VELFAC is a trademark of DOVISTA A/S

System: VELFAC 200 Energy

English: Sliding casement door, function

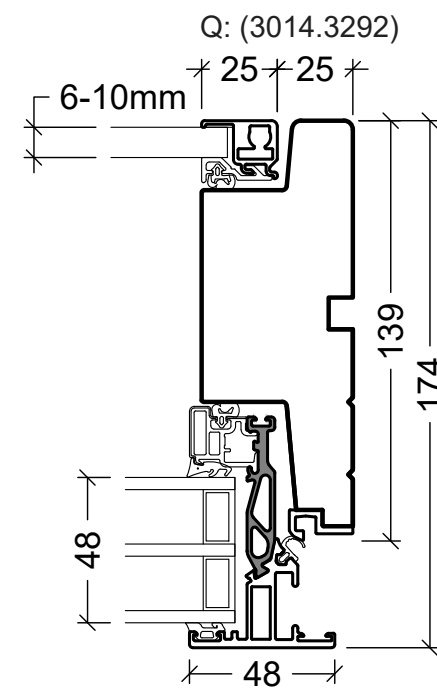
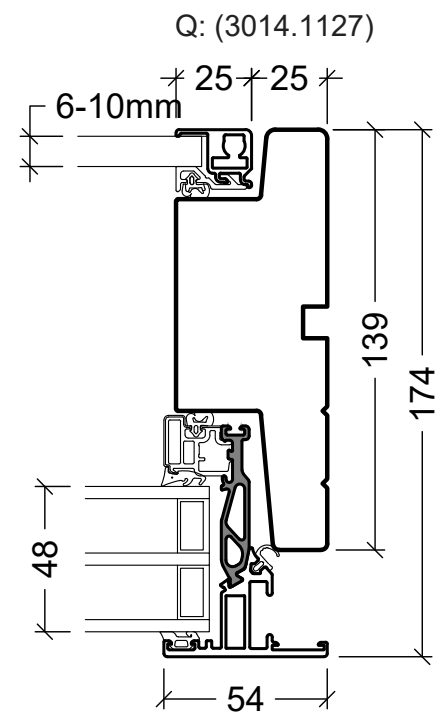
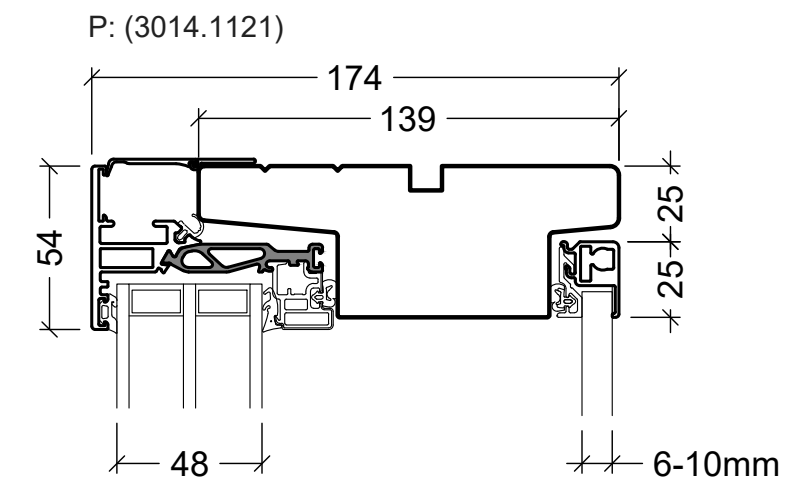
Dansk: Skydedør, funktion

Scale: 1:10 / 1:50

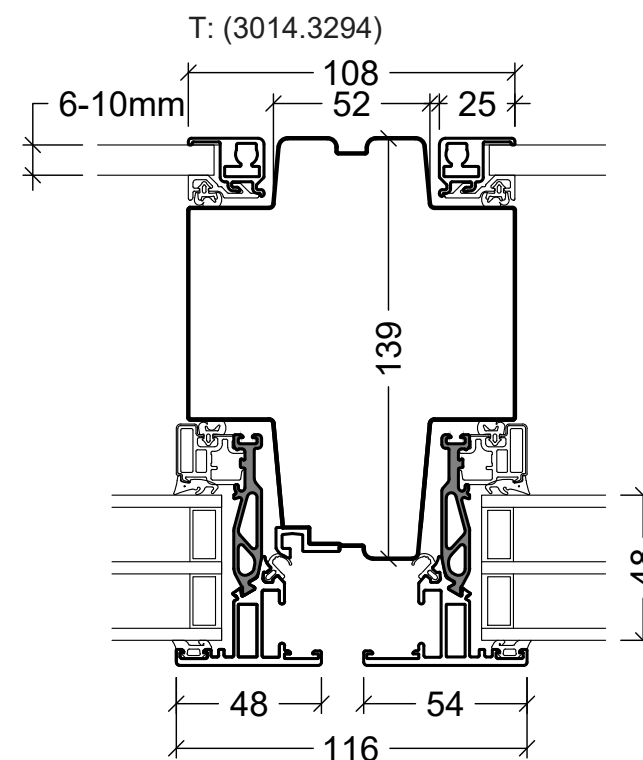
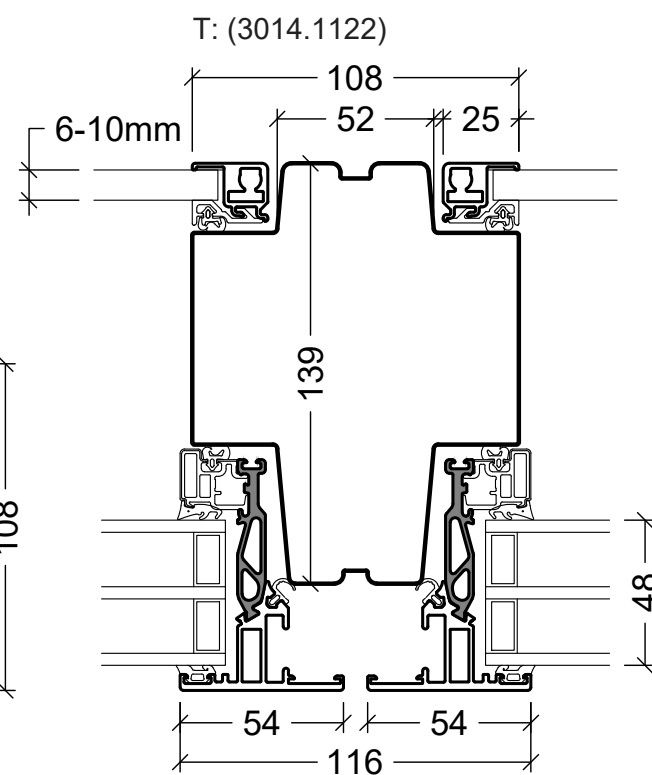
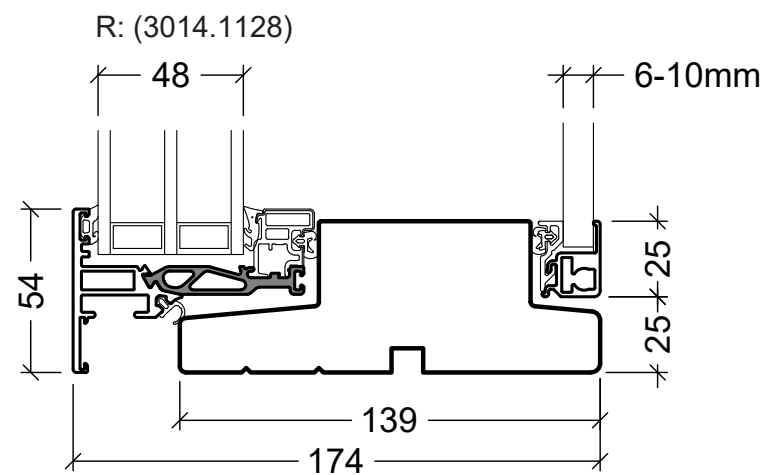
Edition No. 09

01.21 © 2013, 2021

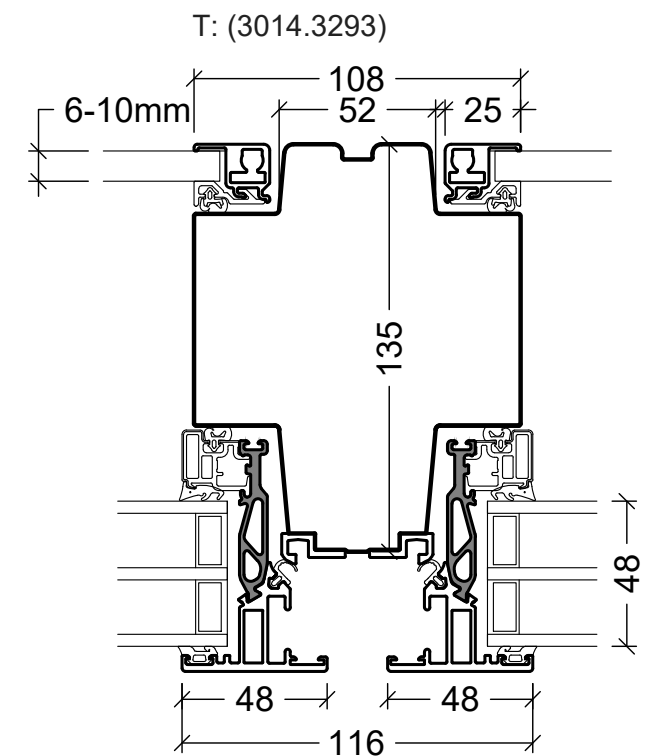
© DOVISTA A/S, CVR-no. 21147583. All intellectual property rights, copyright as well as all rights in know-how vest in DOVISTA A/S. This drawing may not be reproduced, stored, or transmitted in any form by any means (electronic, mechanical, photocopying, recording or otherwise) without the prior written consent of DOVISTA A/S. This drawing is to be used only for the purposes specified by DOVISTA A/S and for no other purpose. We reserve all rights to change the product and product range without notice.



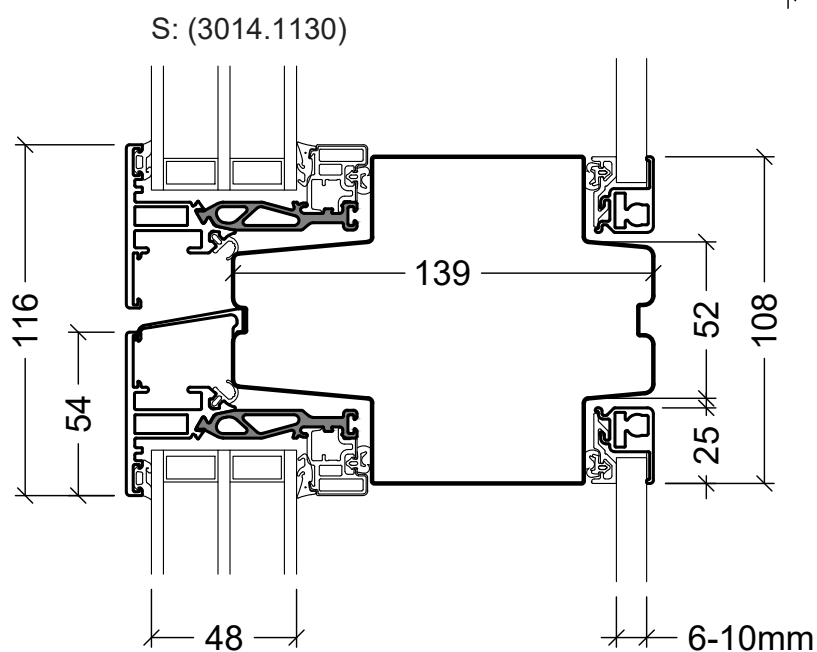
Only for reversible, 48mm sash



Reversible, 48mm sash / V200E



Reversible, 48mm sash



VELFAC®

VELFAC is a trademark of DOVISTA A/S

System: VELFAC 200 Energy

English: Internal sash

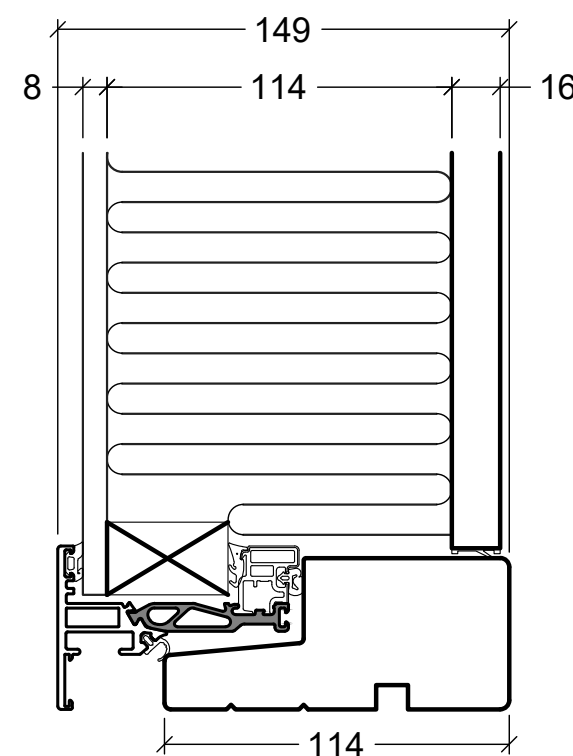
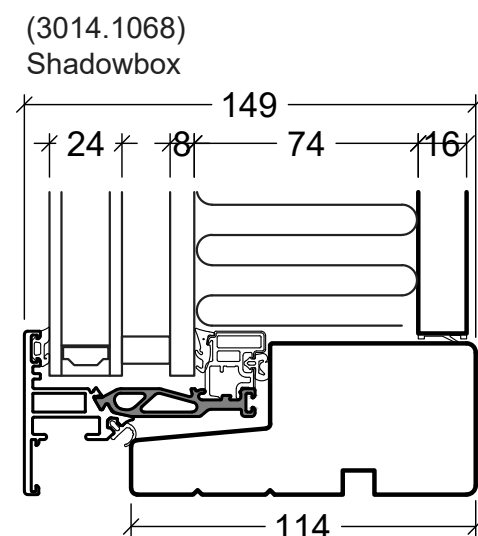
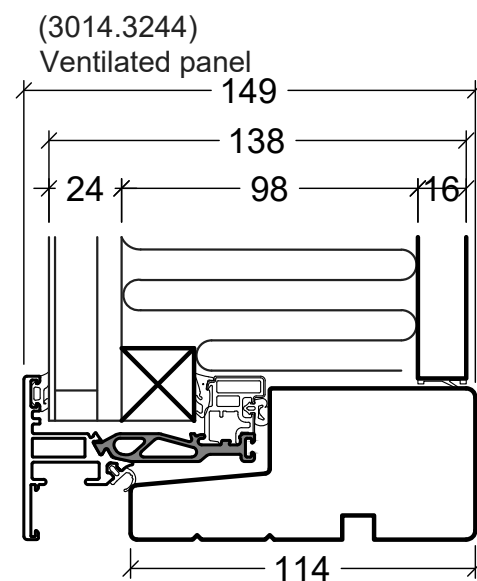
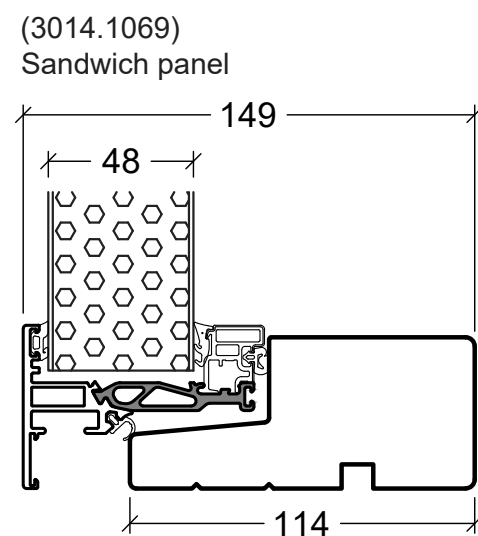
Dansk: Forsatsramme

Scale: 1:2,5

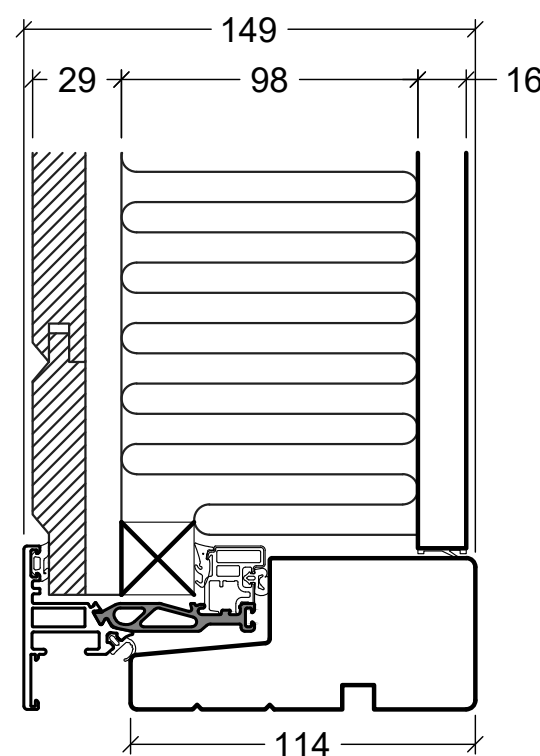
Edition No. 09

01.21 © 2013, 2021

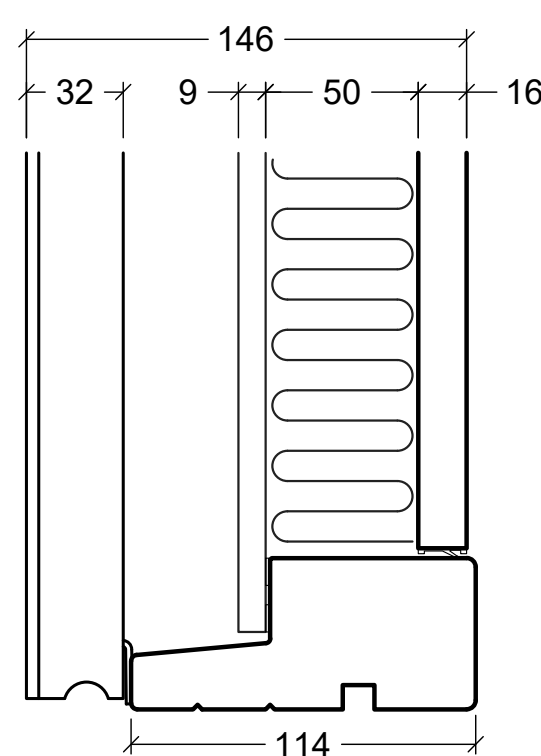
© DOVISTA A/S, CVR-no. 21147583. All intellectual property rights, copyright as well as all rights in know-how vest in DOVISTA A/S. This drawing may not be reproduced, stored, or transmitted in any form by any means (electronic, mechanical, photocopying, recording or otherwise) without the prior written consent of DOVISTA A/S. This drawing is to be used only for the purposes specified by DOVISTA A/S and for no other purpose. We reserve all rights to change the product and product range without notice.



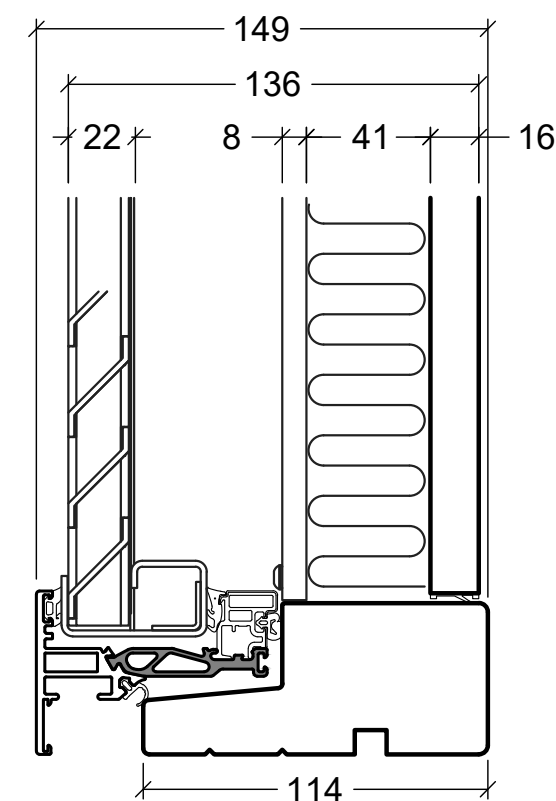
(3014.1081)
Non ventilated panel



(3014.1079)
Ceder panel



(3014.1064)
Rainscreen panel



(3014.1431)
Louvre panel with backboard

VELFAC®

VELFAC is a trademark of DOVISTA A/S

System: VELFAC 200 Energy

English: Panels, 114mm

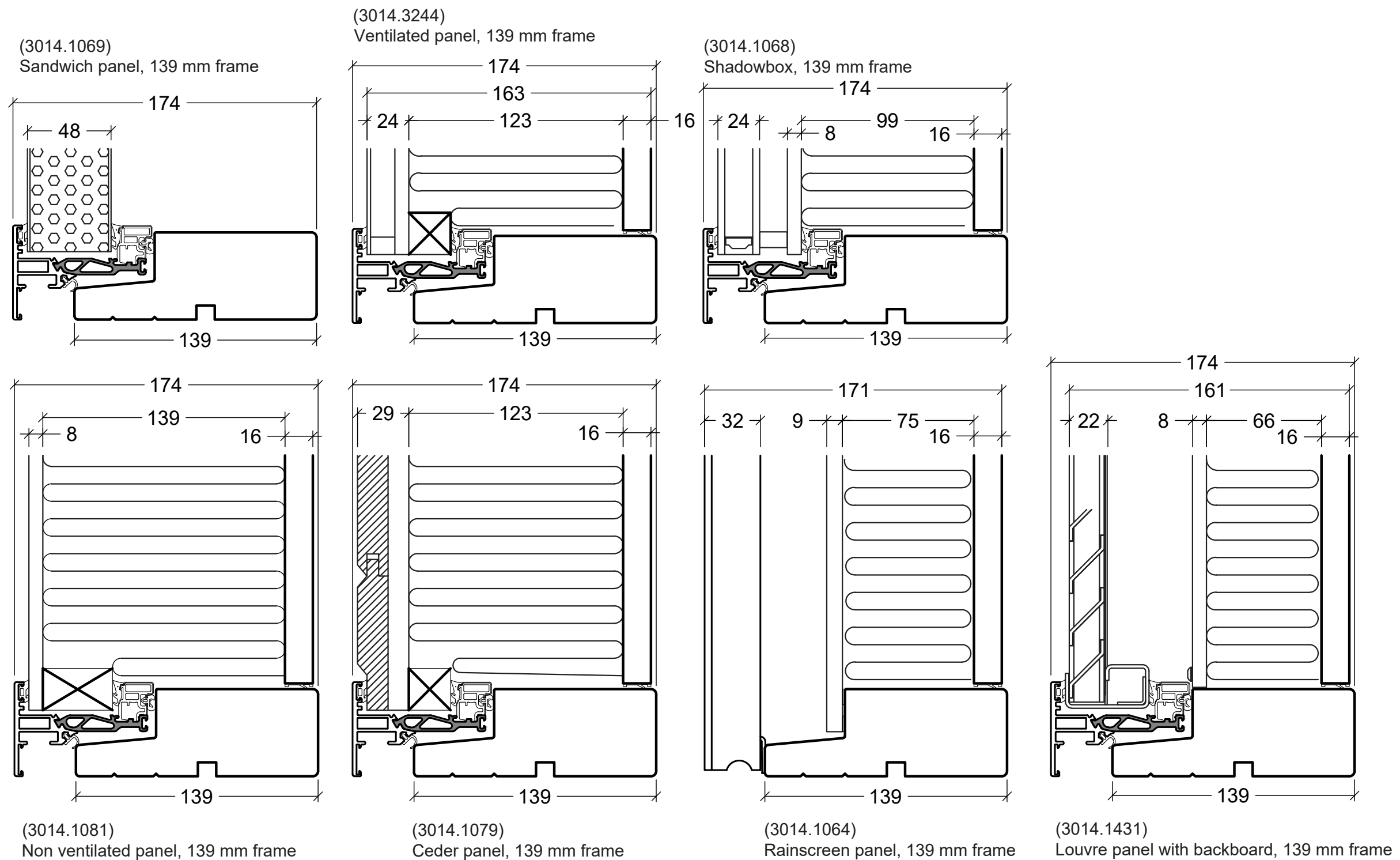
Dansk: Fyldninger, 114mm

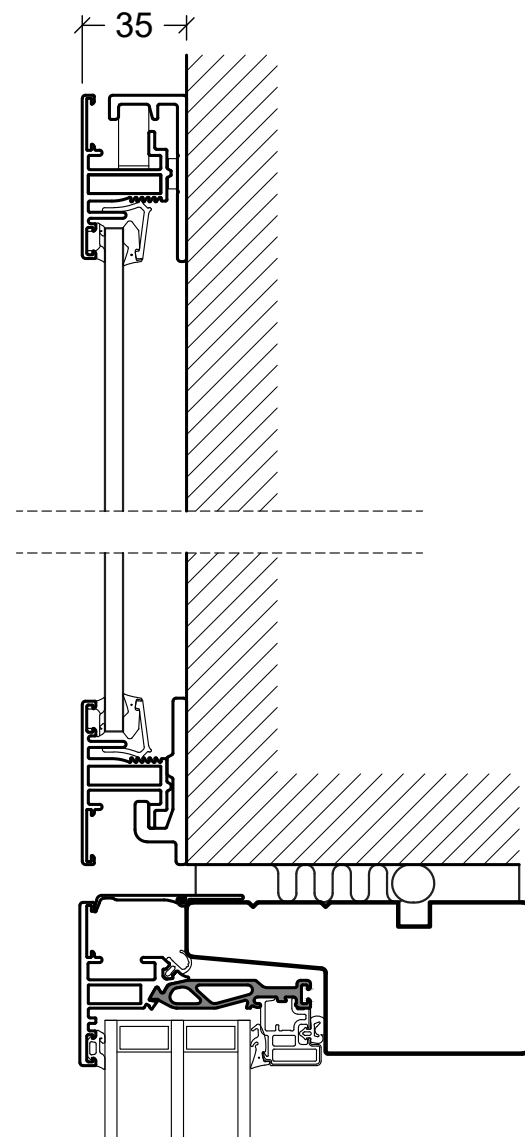
Scale: 1:2,5

Edition No. 09

01.21 © 2013, 2021

© DOVISTA A/S, CVR-no. 21147583. All intellectual property rights, copyright as well as all rights in know-how vest in DOVISTA A/S. This drawing may not be reproduced, stored, or transmitted in any form by any means (electronic, mechanical, photocopying, recording or otherwise) without the prior written consent of DOVISTA A/S. This drawing is to be used only for the purposes specified by DOVISTA A/S and for no other purpose. We reserve all rights to change the product and product range without notice.





Facade panel (Facaderammer)

VELFAC®

VELFAC is a trademark of DOVISTA A/S

System: VELFAC 200 Energy

English: Facade panels

Dansk: Facaderammer

Scale: 1:2,5

Edition No. 09

01.21 © 2013, 2021

© DOVISTA A/S, CVR-no. 21147583. All intellectual property rights, copyright as well as all rights in know-how vest in DOVISTA A/S.
This drawing may not be reproduced, stored, or transmitted in any form by any means (electronic, mechanical, photocopying, recording or otherwise) without the prior written consent of DOVISTA A/S. This drawing is to be used only for the purposes specified by DOVISTA A/S and for no other purpose.
We reserve all rights to change the product and product range without notice.